



RAMIREZ REAL ESTATE

TIMELESS FAMILY HOME IN GREYSTONE ESTATES

11640 RITCHIE AVENUE | MAPLE RIDGE | V2X 6E7



7 BEDROOMS

4 BATHROOMS

4.131 SQ FT

PRIVATE YARD/LARGE LOT

DESCRIPTION

First time on the market in over 20 years! This beautifully renovated and meticulously maintained family home sits on a rare 9,418 sq ft lot in the highly sought-after Greystone Estates. Featuring 7 bedrooms and 4 bathrooms, this spacious home offers an open-concept main floor with formal living and dining rooms—perfect for both everyday living and entertaining.

Upstairs you'll find four generous bedrooms, including a stunning primary suite with walk-in closet and 5-piece ensuite. The bright 2-bedroom basement suite with separate entry, full kitchen, and bathroom offers incredible flexibility for extended family or additional income.

Enjoy a fully fenced backyard with mature landscaping, storage shed, and an expanded covered deck—ideal for year-round gatherings. Centrally located close to schools, shopping, recreation, transit, and the West Coast Express. A rare opportunity for the whole family!

SPECIFICATIONS

STYLE OF HOME: 2 STOREY W/ BSMT

YEAR BUILT: 2002

WATER SUPPLY: CITY/MUNICIPAL

FEATURES: CENTRAL LOCATION

ROYAL LEPAGE
ELITE West

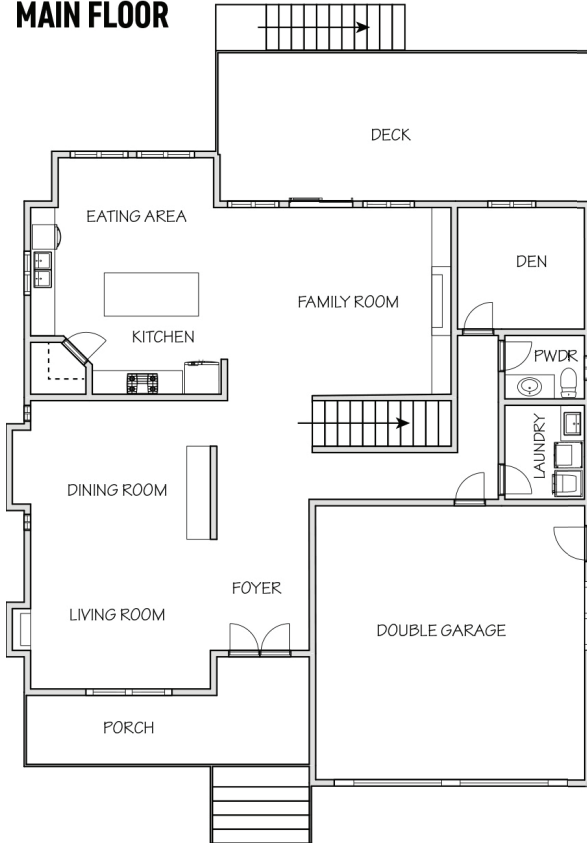
JULIE RAMIREZ | PREC* | 778.385.3875 | INFO@RAMIREZREALESTATE.CA

RAMIREZREALESTATE.CA

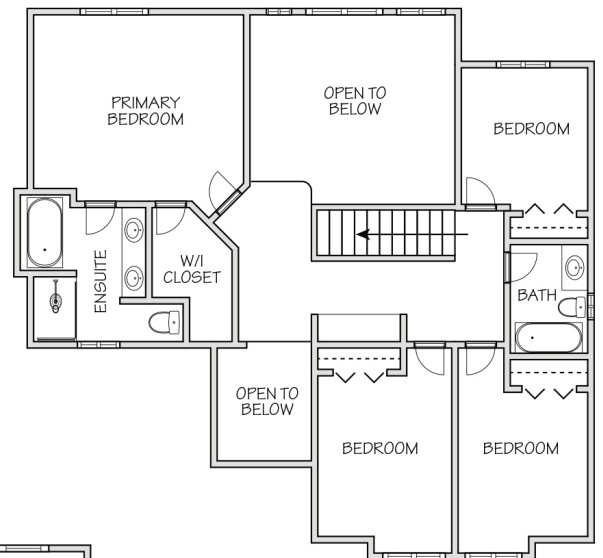
*PERSONAL REAL ESTATE CORPORATION. **INDEPENDENTLY OWNED AND OPERATED.



MAIN FLOOR



UPPER FLOOR



LOWER FLOOR

