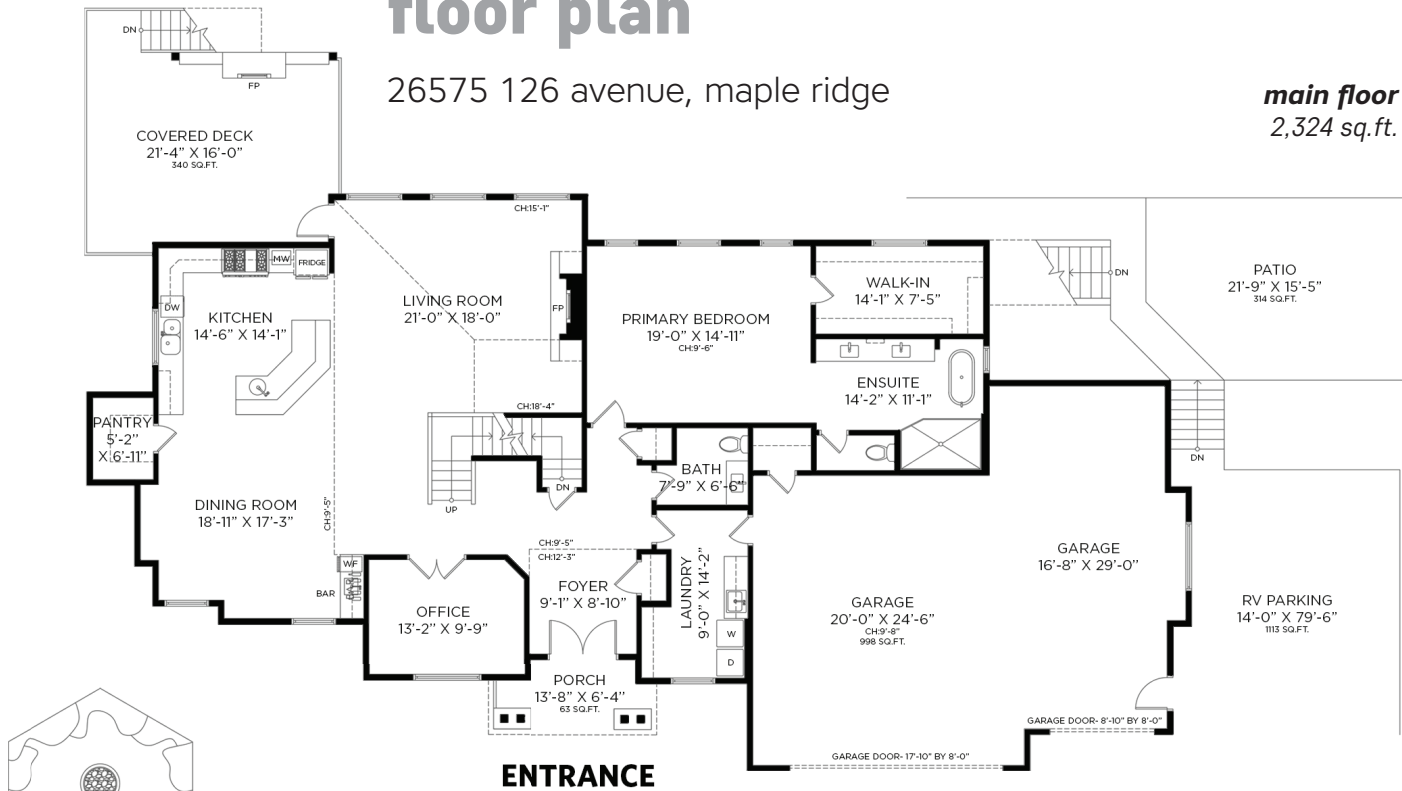


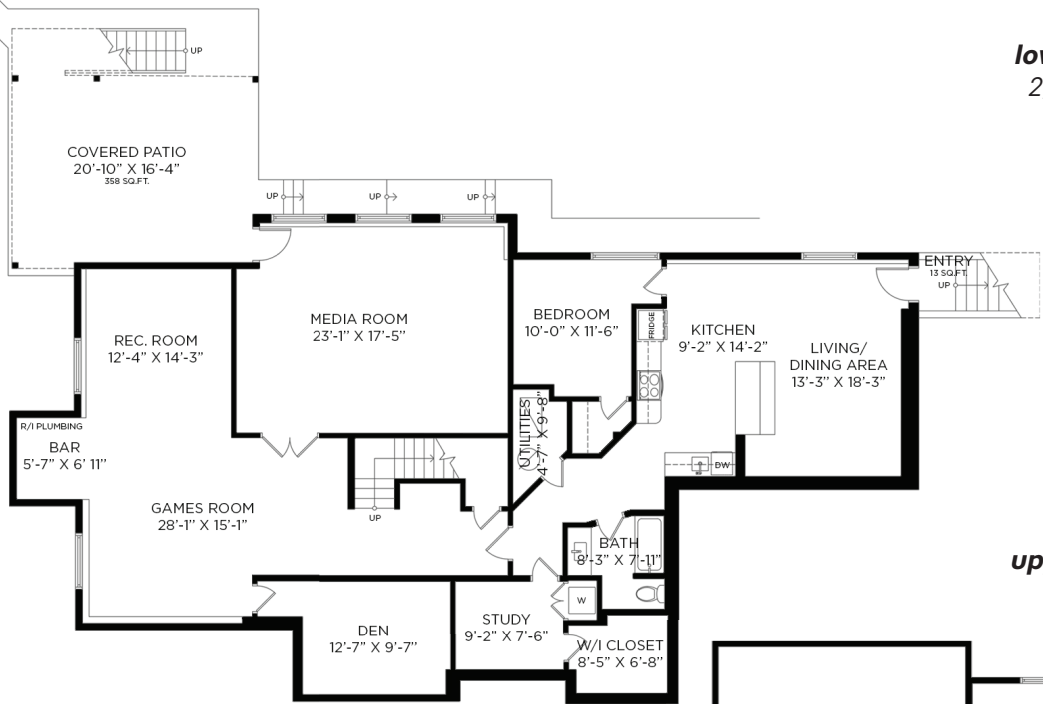
floor plan

26575 126 avenue, maple ridge

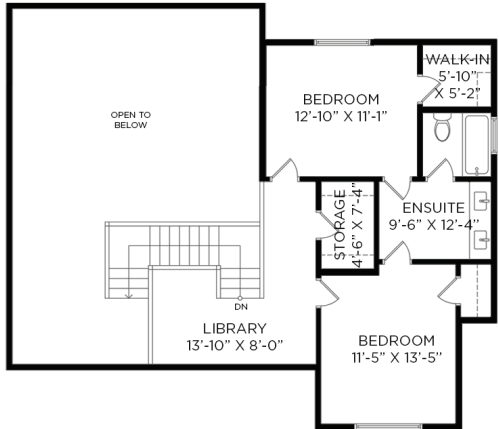
main floor
2,324 sq.ft.







lower floor
2,329 sq.ft.



upper floor
752 sq.ft.



			
4	4	2	3

26575 126 avenue, maple ridge

JULIE RAMIREZ | PREC*

778.385.3875

INFO@RAMIREZREALESTATE.CA

RAMIREZREALESTATE.CA

KW ELITE REALTY
KELLER WILLIAMS



*PERSONAL REAL ESTATE CORPORATION © EACH KELLER WILLIAMS OFFICE IS INDEPENDENTLY OWNED AND OPERATED.

Nestled on a sprawling one acre corner lot in the tranquil Whispering Falls community...

this exquisite executive home offers unparalleled comfort and sophistication. Boasting abundant parking space for RVs and recreational toys, this residence epitomizes modern luxury living.

Step inside to discover a seamless open concept design adorned with hardwood floors and elegant quartz countertops throughout. The gourmet kitchen is a chef’s dream, featuring a spacious pantry, large eating island, and top-of-the-line appliances. Entertain in style in the expansive great room, highlighted by soaring 18-foot vaulted ceilings and a sleek linear fireplace.

Experience the epitome of luxury living in this prestigious Whispering Falls residence.

The main floor is graced by a lavish primary bedroom retreat, complete with a luxurious double shower for ultimate relaxation. Additional highlights include a covered deck with a cozy gas fireplace, a convenient 3-car garage, a 200 amp service for added convenience and a Generac® whole house generator.

Descend to the 2,200 square foot walk-out basement, boasting 9-foot ceilings and two separate entrances. This impressive space includes a fully contained suite, ideal for multi-generational living, as well as a versatile rec room for endless entertainment possibilities.

Conveniently located, this remarkable home offers easy access to Meadow Ridge private school, Golden Ears Park, an equestrian center, and ATV trails, ensuring endless opportunities for outdoor recreation and leisure. ■



1
An open concept great room designed for both entertaining and relaxation. Step into a space where seamless flow meets inviting warmth, creating the perfect ambiance for gatherings with family and friends or quiet moments of solitude.

4
Welcome to your own private paradise, where endless entertainment possibilities await on a lush one-acre yard. This expansive outdoor haven is perfectly tailored for leisure, recreation, and creating cherished memories with family and friends.

2
The primary bedroom is a haven of tranquility, exuding elegance and charm from every corner. A serene atmosphere, inviting you to unwind and escape the stresses of the day. Prepare to be captivated by the opulent double shower, a stunning centerpiece that epitomizes luxury and indulgence.

5
As the sun sets, gather around a cozy fire pit to roast marshmallows, share stories, and savor the enchanting ambiance of crackling flames under the starlit sky. With plenty of seating options, including Adirondack chairs and outdoor sofas, everyone can find their perfect spot to relax and unwind.

3
Experience modern comfort in this fully contained suite featuring an open living room and kitchen layout. Relax in the cozy living area, prepare gourmet meals in the sleek kitchen, and retreat to the tranquil bedroom for peaceful slumber. Luxury and functionality converge for the perfect living experience.

6
Step into culinary bliss in this captivating open concept gourmet kitchen, thoughtfully designed to be the heart of your home and the ultimate entertainment hub. With its seamless integration into the living and dining areas, this kitchen is an inviting space where cooking, mingling, and making memories come together effortlessly.